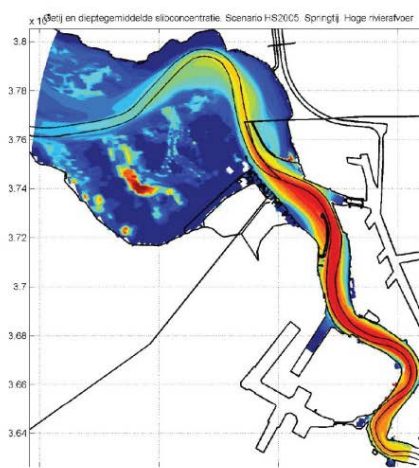


## Instandhouding vaarpassen Schelde Milieuvergunningen terugstorten baggerspecie



## LTV – Veiligheid en Toegankelijkheid De rol van slib in de Westerschelde Basisrapport grootschalige ontwikkeling G-3

01 oktober 2013


---


## Colofon

---

### **International Marine & Dredging Consultants**

Adres: Coveliersstraat 15, 2600 Antwerpen, België

: + 32 3 270 92 95


: + 32 3 235 67 11


Email: [info@imdc.be](mailto:info@imdc.be)

Website: [www.imdc.be](http://www.imdc.be)

### **Deltares**

Adres: Rotterdamseweg 185, 2600 MH Delft, Nederland

: + 31 (0)88 335 8273


: +31 (0)88 335 8582


Email: [info@deltares.nl](mailto:info@deltares.nl)

Website: [www.deltares.nl](http://www.deltares.nl)

### **Svašek Hydraulics BV**

Adres: Schiehaven 13G, 3024 EC Rotterdam, Nederland

: +31 10 467 13 61


: +31 10 467 45 59


Email: [info@svasek.com](mailto:info@svasek.com)

Website: [www.svasek.com](http://www.svasek.com)

### **ARCADIS Nederland BV**

Adres: Nieuwe Stationsstraat 10, 6811 KS Arnhem, Nederland

: +31 (0)26 377 89 11

: +31 (0)26 377 85 60

Email: [info@arcadis.nl](mailto:info@arcadis.nl)

Website: [www.arcadis.nl](http://www.arcadis.nl)

---

## Document Identificatie

---

Titel	Grootschalige sedimentbalans van de Westerschelde
Project	Instandhouding vaarpassen Schelde Milieuvergunningen terugstorten baggerspecie
Opdrachtgever	Afdeling Maritieme Toegang - Tavernierkaai 3 - 2000 Antwerpen
Bestek nummer	16EF/2010/14
Documentref	I/RA/11387/13.080/GVH
Documentnaam	K:\PROJECTS\11\11387 - Instandhouding Vaarpassen Schelde\10-Rap\Op te leveren rapporten\Oplevering 2013.10.01\G-3 - de rol van slib in de Westerschelde_v2.0.docx

---

## Revisies / Goedkeuring

---

Versie	Datum	Omschrijving	Auteur	Nazicht	Goedgekeurd
1.0	01/10/2013	Finaal	J. Cleveringa / G. Dam	M. Taal / B. Blik	

---

## Verdeellijst

---

1	Analoog	Youri Meersschaut
1	Digitaal	Youri Meersschaut

